

REV	LOCATIONS	DESCRIPTION	DATE	REVISER	APPD
1	△	Size changes	23/APR/21	KATE	JOHNNY
2	△	Add spray code	13/Jan/25	NICK	LEO

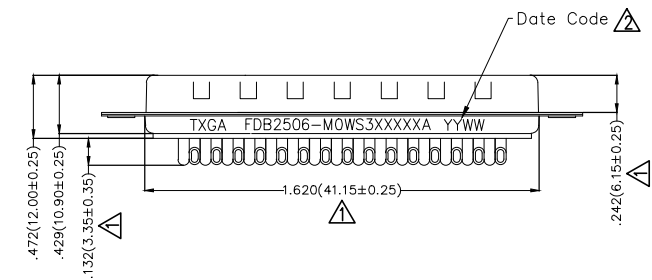
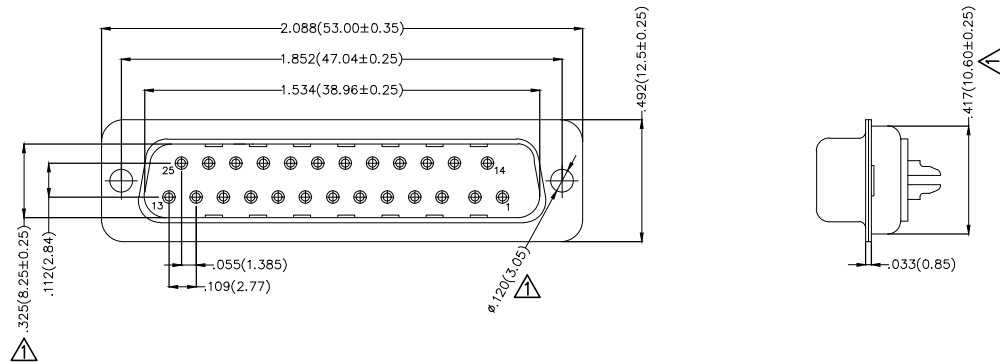
SPECIFICATIONS

Electrical

Current Rating: 3A AC(rms)/DC  
Voltage Rating: 250V AC(rms)/DC  
Contact Resistance: 25 mΩ Max  
Insulation Resistance: 1000 MΩ Min  
Withstanding Voltage: 500V AC r.m.s  
Temperature Range-Operating: -55°C~+105°C

Material and plating


Housing: PBT UL 94V-0  
Contact: Copper Alloy/  
Selective gold in contact area, tin on tail  
Shell: SPCC/ Nickel Plated



Ordering Information

FDB 25 06 - M0 W S 3 XX XX X A  
1 2 3 4 5 6 7 8 9 10 11

1	Category FDB- D-SUB Connector	2	Circuits 25-25 Circuits	3	Distinction No. 06	4	Type MO-Male	5	Assembly Layout W-Welding Type	6	Entry Angle S-180° Vertical
7	Plating 3-Selective gold in contact area, tin on tail	8	Thickness of Plating 00-Gold Flash 03-3μ" Custom Plate Available	9	Color-Resin K6-Black U1-Blue WH-White	10	Packaging K-Tray L-Tube	11	Distinction Type A-A Type		

THIRD ANGLE PROJECTION	GENERAL TOLERANCES (UNLESS SPECIFIED)		APPROVE BY FRANK	DATE 28/JUN/13	PART NO. FDB2506-MOWS3XXXXXA	ITEM NO. FDB2506	 Leader Of Industry	
	DESIGN UNITS Inch (metric)	X.±.012(0.30) X.X±.008(0.20) X.XX±.006(0.15) X.XXX±.004(0.10)	X.±5' X.±2' .XX±1" .XXX±0.5'	CHECKED BY JACOB	DATE 28/JUN/13	TITLE D-SUB connector 25 Circuits 180° Vertical Male		REV 2
SCALE 5:1	SIZE A4	DRAWN BY CHERRY		DATE 28/JUN/13	THIS DRAWING CONTAINS INFORMATION THAT IS PROPRIETARY TO TXGA INDUSTRIAL ELECTRONICS(S.Z)CO.,LTD AND SHOULD NOT BE USED WITHOUT WRITTEN PERMISSION			

REV	LOCATIONS	DESCRIPTION	DATE	REVISER	APPD
1	△	Size changes	23/APR/21	KATE	JOHNNY
2	△	Add spray code	13/Jan/25	NICK	LEO

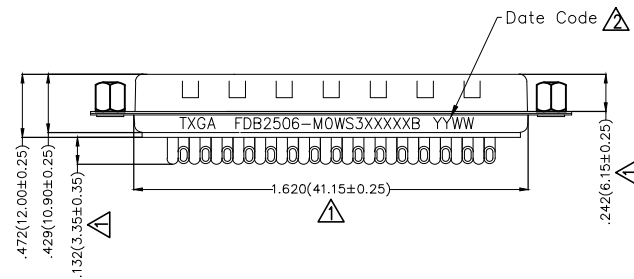
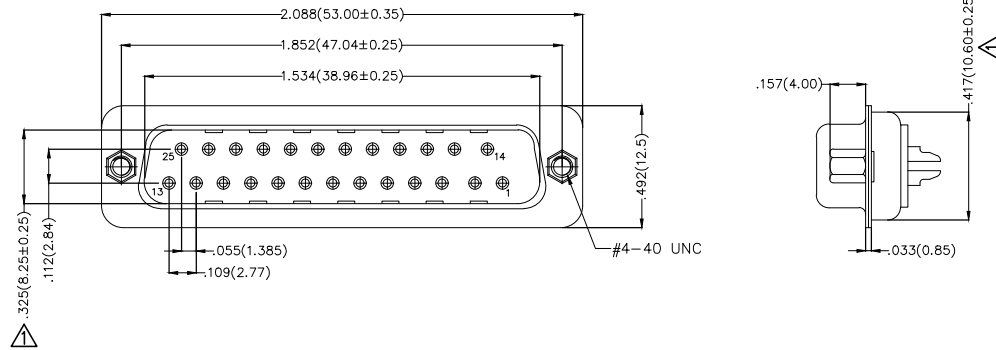
SPECIFICATIONS

Electrical

Current Rating: 3A AC(rms)/DC  
Voltage Rating: 250V AC(rms)/DC  
Contact Resistance: 25 mΩ Max  
Insulation Resistance: 1000 MΩ Min  
Withstanding Voltage: 500V AC r.m.s  
Temperature Range-Operating: -55°C~+105°C

Material and plating


Housing: PBT UL 94V-0  
Contact: Copper Alloy/  
Selective gold in contact area, tin on tail  
Shell: SPCC/ Nickel Plated  
Screws: Copper Alloy/ Nickel Plated



Ordering Information

FDB 25 06 - M0 W S 3 XX XX X B  
1 2 3 4 5 6 7 8 9 10 11

1	Category FDB- D-SUB Connector	2	Circuits 25-25 Circuits	3	Distinction No. 06	4	Type M0-Male	5	Assembly Layout W-Welding Type	6	Entry Angle S-180° Vertical
7	Plating 3-Selective gold in contact area, tin on tail	8	Thickness of Plating 00-Gold Flash 03-3μ" Custom Plate Available	9	Color-Resin K6-Black U1-Blue	10	Packaging K-Tray L-Tube	11	Distinction Type B-B Type		

THIRD ANGLE PROJECTION	GENERAL TOLERANCES (UNLESS SPECIFIED)		APPROVE BY FRANK	DATE 28/JUN/13	PART NO. FDB2506-M0WS3XXXXXB	ITEM NO. FDB2506	 Leader Of Industry	
	DESIGN UNITS Inch (metric)	X.±0.012(0.30) X.X±0.008(0.20) X.XX±0.006(0.15) X.XXX±0.004(0.10)	X.±5' X.±2' .XX±1" .XXX±0.5'	CHECKED BY JACOB	DATE 28/JUN/13	TITLE D-SUB connector 25 Circuits 180° Vertical Male		REV 2
SCALE 5:1	SIZE A4	DRAWN BY CHERRY		DATE 28/JUN/13	THIS DRAWING CONTAINS INFORMATION THAT IS PROPRIETARY TO TXGA INDUSTRIAL ELECTRONICS(S.Z)CO.,LTD AND SHOULD NOT BE USED WITHOUT WRITTEN PERMISSION			

REV	LOCATIONS	DESCRIPTION	DATE	REVISER	APPD
1	△	Size changes	23/APR/21	KATE	JOHNNY
2	△	Add spray code	13/Jan/25	NICK	LEO

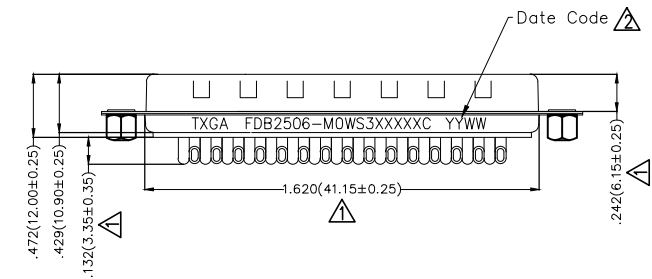
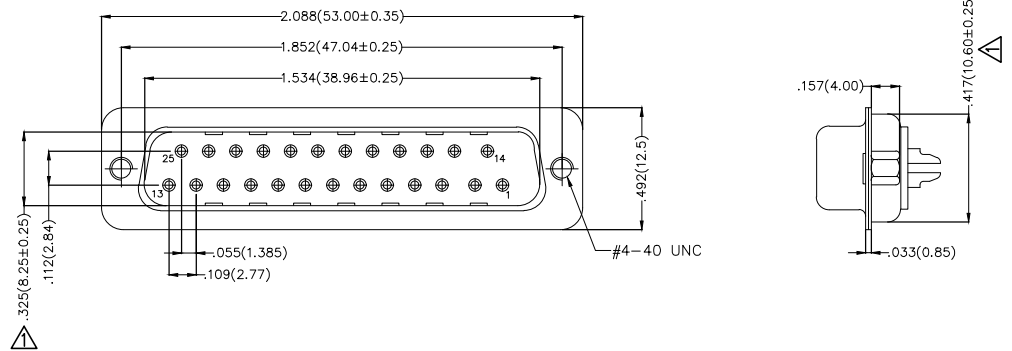
SPECIFICATIONS

Electrical

Current Rating: 3A AC(rms)/DC  
Voltage Rating: 250V AC(rms)/DC  
Contact Resistance: 25 mΩ Max  
Insulation Resistance: 1000 MΩ Min  
Withstanding Voltage: 500V AC r.m.s  
Temperature Range-Operating: -55°C~+105°C

Material and plating


Housing: PBT UL 94V-0  
Contact: Copper Alloy/  
Selective gold in contact area, tin on tail  
Shell: SPCC/ Nickel Plated  
Screws: Copper Alloy/ Nickel Plated



Ordering Information

FDB 25 06 - M0 W S 3 XX XX X C  
1 2 3 4 5 6 7 8 9 10 11

1	Category FDB- D-SUB Connector	2	Circuits 25-25 Circuits	3	Distinction No. 06	4	Type M0-Male	5	Assembly Layout W-Welding Type	6	Entry Angle S-180° Vertical
7	Plating 3-Selective gold in contact area, tin on tail	8	Thickness of Plating 00-Gold Flash 03-3μ" Custom Plate Available	9	Color-Resin K6-Black U1-Blue	10	Packaging K-Tray L-Tube	11	Distinction Type C-C Type		

THIRD ANGLE PROJECTION	GENERAL TOLERANCES (UNLESS SPECIFIED)		APPROVE BY FRANK	DATE 28/JUN/13	PART NO. FDB2506-M0WS3XXXXXC	ITEM NO. FDB2506	 Leader Of Industry	
	DESIGN UNITS Inch (metric)	X.±.012(0.30) X.X±.008(0.20) X.XX±.006(0.15) X.XXX±.004(0.10)	X.±5' X.±2' .XX±1" .XXX±0.5'	CHECKED BY JACOB	DATE 28/JUN/13	TITLE D-SUB connector 25 Circuits 180° Vertical Male		REV 2
SCALE 5:1	SIZE A4		DRAWN BY CHERRY	DATE 28/JUN/13	THIS DRAWING CONTAINS INFORMATION THAT IS PROPRIETARY TO TXGA INDUSTRIAL ELECTRONICS(S.Z)CO.,LTD AND SHOULD NOT BE USED WITHOUT WRITTEN PERMISSION			

REV	LOCATIONS	DESCRIPTION	DATE	REVISER	APPD
1	△	Size changes	23/APR/21	KATE	JOHNNY
2	△	Add spray code	13/Jan/25	NICK	LEO

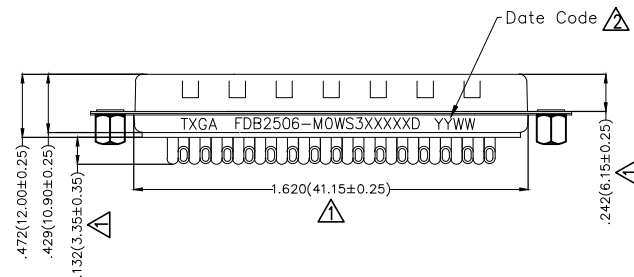
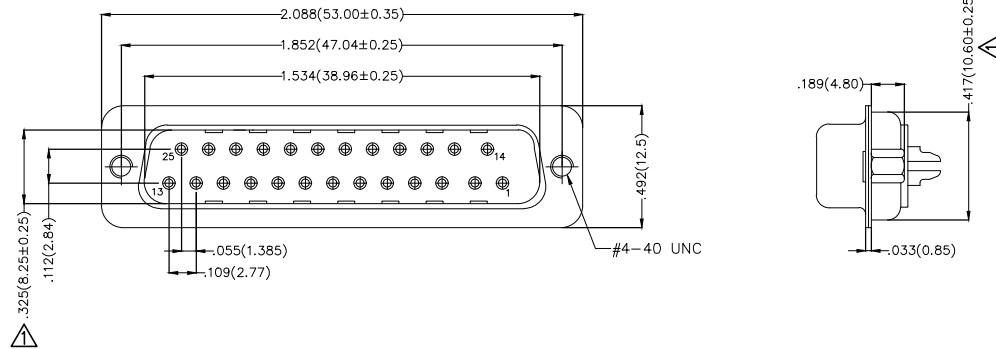
### SPECIFICATIONS

#### Electrical

Current Rating: 3A AC(rms)/DC  
Voltage Rating: 250V AC(rms)/DC  
Contact Resistance: 25 mΩ Max  
Insulation Resistance: 1000 MΩ Min  
Withstanding Voltage: 500V AC r.m.s  
Temperature Range-Operating: -55°C~+105°C

#### Material and plating


Housing: PBT UL 94V-0  
Contact: Copper Alloy/  
Selective gold in contact area, tin on tail  
Shell: SPCC/ Nickel Plated  
Screws: Copper Alloy/ Nickel Plated



### Ordering Information

FDB 25 06 - MOWS 3 XX XX X D  
1 2 3 4 5 6 7 8 9 10 11

1	Category FDB- D-SUB Connector	2	Circuits 25-25 Circuits	3	Distinction No. 06	4	Type MO-Male	5	Assembly Layout W-Welding Type	6	Entry Angle S-180° Vertical
7	Plating 3-Selective gold in contact area, tin on tail	8	Thickness of Plating 00-Gold Flash 03-3μ" Custom Plate Available	9	Color-Resin K6-Black U1-Blue	10	Packaging K-Tray L-Tube	11	Distinction Type D-D Type		

THIRD ANGLE PROJECTION	GENERAL TOLERANCES (UNLESS SPECIFIED)		APPROVE BY FRANK	DATE 28/JUN/13	PART NO. FDB2506-MOWS3XXXXD	ITEM NO. FDB2506	 Leader Of Industry	
	DESIGN UNITS Inch (metric)	X.±.012(0.30) X.X±.008(0.20) X.XX±.006(0.15) X.XXX±.004(0.10)	X.±5' X.±2' .XX±1" .XXX±0.5'	CHECKED BY JACOB	DATE 28/JUN/13	TITLE D-SUB connector 25 Circuits 180° Vertical Male		REV 2
SCALE 5:1	SIZE A4		DRAWN BY CHERRY	DATE 28/JUN/13	THIS DRAWING CONTAINS INFORMATION THAT IS PROPRIETARY TO TXGA INDUSTRIAL ELECTRONICS(S.Z)CO.,LTD AND SHOULD NOT BE USED WITHOUT WRITTEN PERMISSION			

REV	LOCATIONS	DESCRIPTION	DATE	REVISER	APPD
1	△	Size changes	23/APR/21	KATE	JOHNNY
2	△	Add spray code	13/Jan/25	NICK	LEO

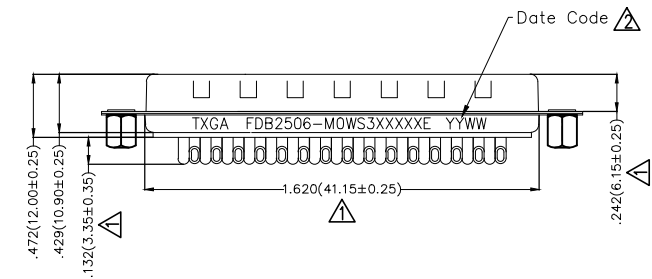
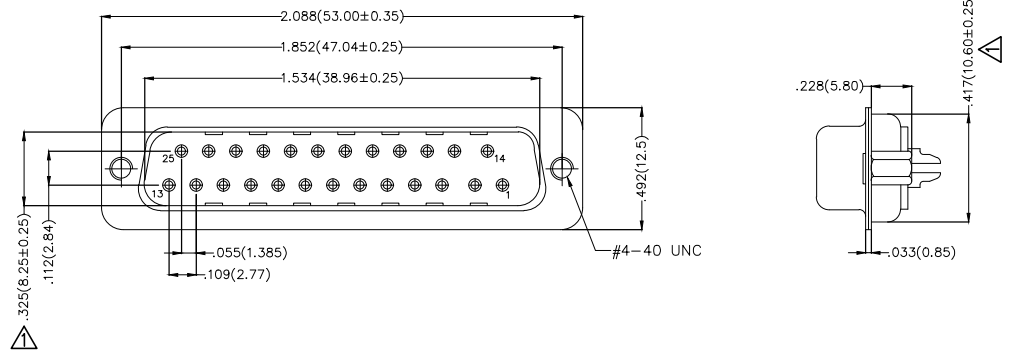
SPECIFICATIONS

Electrical

Current Rating: 3A AC(rms)/DC  
Voltage Rating: 250V AC(rms)/DC  
Contact Resistance: 25 mΩ Max  
Insulation Resistance: 1000 MΩ Min  
Withstanding Voltage: 500V AC r.m.s  
Temperature Range-Operating: -55°C~+105°C

Material and plating


Housing: PBT UL 94V-0  
Contact: Copper Alloy/  
Selective gold in contact area, tin on tail  
Shell: SPCC/ Nickel Plated  
Screws: Copper Alloy/ Nickel Plated



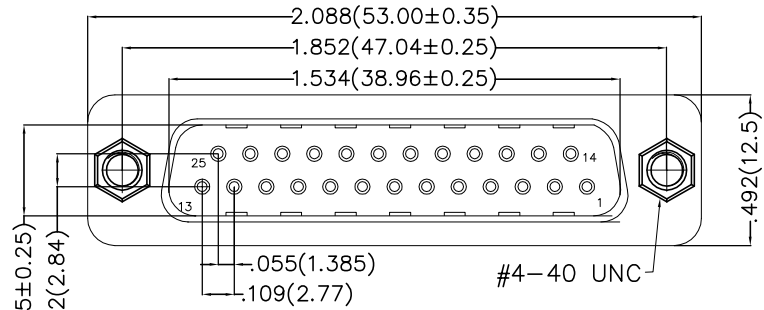
Ordering Information

FDB 25 06 - MOWS 3 XX XX X E  
1 2 3 4 5 6 7 8 9 10 11

1	Category FDB- D-SUB Connector	2	Circuits 25-25 Circuits	3	Distinction No. 06	4	Type MO-Male	5	Assembly Layout W-Welding Type	6	Entry Angle S-180° Vertical
7	Plating 3-Selective gold in contact area, tin on tail	8	Thickness of Plating 00-Gold Flash 03-3μ" Custom Plate Available	9	Color-Resin K6-Black U1-Blue	10	Packaging K-Tray L-Tube	11	Distinction Type E-E Type		

THIRD ANGLE PROJECTION	GENERAL TOLERANCES (UNLESS SPECIFIED)		APPROVE BY FRANK	DATE 28/JUN/13	PART NO. FDB2506-MOWS3XXXXXE	ITEM NO. FDB2506	 Leader Of Industry	
	DESIGN UNITS Inch (metric)	X.±.012(0.30) X.X±.008(0.20) X.XX±.006(0.15) X.XXX±.004(0.10)	X.±5' X.±2' .XX±1" .XXX±0.5'	CHECKED BY JACOB	DATE 28/JUN/13	TITLE D-SUB connector 25 Circuits 180° Vertical Male		REV 2
SCALE 5:1	SIZE A4		DRAWN BY CHERRY	DATE 28/JUN/13	THIS DRAWING CONTAINS INFORMATION THAT IS PROPRIETARY TO TXGA INDUSTRIAL ELECTRONICS(S.Z)CO.,LTD AND SHOULD NOT BE USED WITHOUT WRITTEN PERMISSION			

1	2	3	4	5	6	7	8
REV	LOCATIONS	DESCRIPTION	DATE	REVISER	APPD		



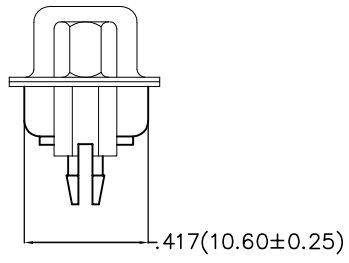
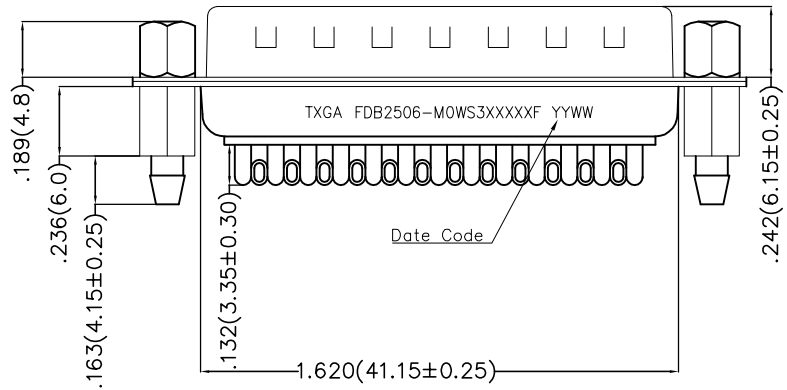
**SPECIFICATIONS**

**Electrical**

Current Rating: 3A AC(rms)/DC  
Voltage Rating: 250V AC(rms)/DC  
Contact Resistance: 25 mΩ Max  
Insulation Resistance: 1000 MΩ Min  
Withstanding Voltage: 500V AC r.m.s  
Temperature Range-Operating: -55°C~+105°C

**Material and plating**

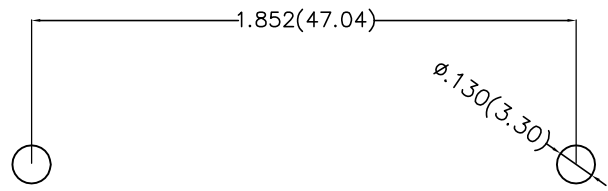
Housing: PBT UL 94V-0  
Contact: Copper Alloy/  
Selective gold in contact area, tin on tail  
Shell: SPCC/ Front Nickel Plated; Back Tin Plated  
Screws: Copper Alloy/ Nickel Plated  
Board Lock: Copper Alloy / Tin Plated



**Ordering Information**

FDB 25 06 - M0 W S 3 XX XX K F  
1 2 3 4 5 6 7 8 9 10 11

1	Category	2	Circuits	3	Distinction No.	4	Type	5	Assembly Layout	6	Entry Angle
	FDB- D-SUB Connector		25-25 Circuits		06		M0-Male		W-Welding Type		S-180° Vertical
7	Plating	8	Thickness of Plating	9	Color-Resin	10	Packaging	11	Distinction Type		
	3-Selective gold in contact area, tin on tail		00-Gold Flash 03-3μ" Custom Plate Available		K6-Black U1-Blue		K-Tray		F-F Type		



Recommended P.C.Board Layout

THIRD ANGLE PROJECTION	GENERAL TOLERANCES (UNLESS SPECIFIED)		APPROVE BY	DATE	PART NO.	ITEM NO.	 Building Technology Cornerstone
	X.±.012(0.30)	X:±5'	FRANK	28/JUN/13	FDB2506-MOWS3XXXXKF	FDB2506	
DESIGN UNITS Inch (metric)	X.X±.008(0.20)	.X'±2'	CHECKED BY	DATE	TITLE		REV 0 SHEET NO. 1/1
SCALE	X.XX±.006(0.15)	.XX'±1'	JACOB	28/JUN/13	D-SUB connector 25 Circuits 180° Vertical Male		
5:1	X.XXX±.004(0.10)	.XXX'±0.5'	DRAWN BY	DATE	THIS DRAWING CONTAINS INFORMATION THAT IS PROPRIETARY TO TXGA INDUSTRIAL ELECTRONICS(S.Z)CO.,LTD AND SHOULD NOT BE USED WITHOUT WRITTEN PERMISSION		
SIZE			CHERRY	28/JUN/13			
A4							